



Rail car unloading machine-RUMig3

Minimal installation depth

Don't spend money going deep in the ground. The RUMig3 only has a 6-foot installation depth requirement.



High speed unloading

The RUMig3 can unload coal at 63 lbs a cubic foot at approximately 2600 TPH. With variable speed capabilities it can be tailored to the project's specific needs.

Up to

12 inch
minus
material



Proven track record

Used by Fortune 500 companies in various parts of the world for many years. Repeat customers are the norm for the Ashross RUMig3.

How does a
100 ton of
material
unloaded in
approximately
5-6 minutes
sound?

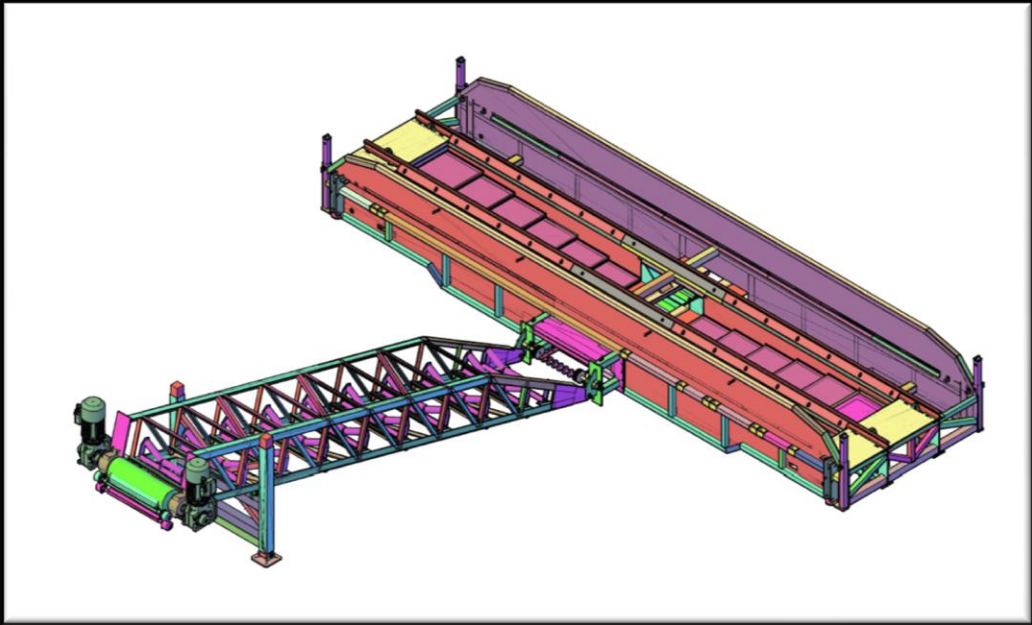


Upgradable and scaleable

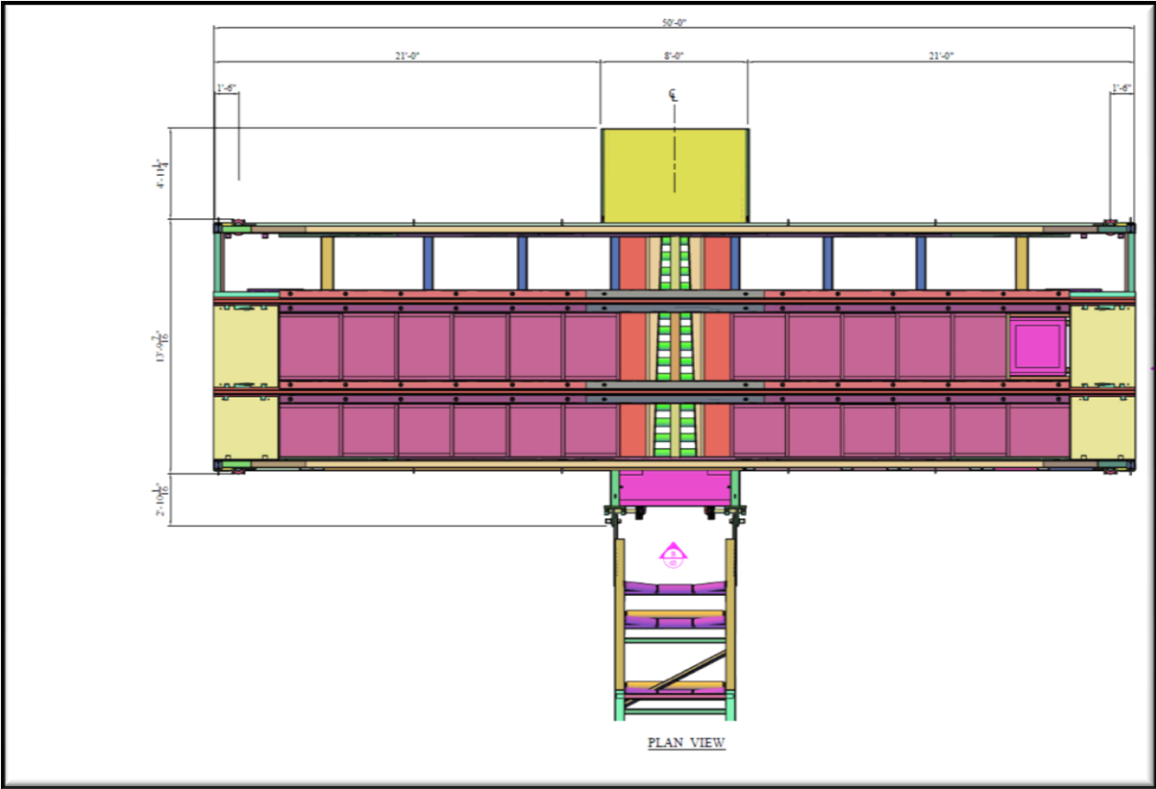
The standard RUMig3 comes with one 40 foot 60 inch wide main conveyor. The RUMig3-2 comes with two conveyors and the RUMig3-4 comes with four. This equipment fits the size and requirements of your project.

The
RUMig3 is
up to the
most
demanding
jobs.

Ashross RUMig3 drawings



3-D view



Top view

Ashross RUMig3 Equipment specifications

Gearbox/parts

- The motors are mounted on SEW Euro drive gearboxes.
- Each head pulley is 19 inches in diameter.
- The tail pulley is 12 inches in diameter.
- There are belt adjusters near the tail end of each conveyor.
- The machine has an adjustable tail pulley.
- The machine comes with four hydraulic 24 inch jacks for maintenance.
- One hydraulic power unit per machine.
- One electric panel per machine.
- The machine has a hydraulic power unit with an approximate hydraulic storage tank capacity of 300 gallons.
- Each feed system uses AR ½ inch plate.
- Rollers are rated CEMA D.
- The machine uses Chevron Rando HD 32 hydraulic oil.

Dimensions

- The machine comes with one 60 inch wide belt on 40 foot long conveyor.
- The machine is 13 feet 9 and ¼ inch wide.
- The machine is 50 feet long.
- The machine is 4 feet below the top of tie and 3 feet above the top of tie.
- Each tail pulley assembly is 8 feet 6 inches wide.
- From top of tie to bottom of I-beam is 36 inches.

Electrical

- The machine has a 3 HP motor on the oil cooler.
- The machine has two electric motors on the head pulley on main conveyor (each rated 75 hp).
- The motors are mounted on SEW Euro drive gearboxes.
- The machine requires between 575 and 600 amps of electrical service.
- Allen Bradley PLC on control unit.
- The machine comes with a Weight Shark 500 weight scale (optional integration with PLC).
- The machine has three 100 hp electric motors driving three hydraulic pumps (Saur Danfoss).
- The machine has variable frequency drives to power the conveyors.

Safety

- There will be guarding on all exposed gear shafts and motor shafts.
- The machine comes with belt alignment switches, zero speed indicator, hydraulic oil temperature sensor, self aligning pulleys, e-stops, pull cords and one ASGCO belt scrapper.

Features

- The machine comes with sliding plate feed system (six per machine) that move the material from the ends of the machine to the main discharge conveyor(s). These feeders plates are powered by the hydraulic system.
- The machine will have walkways around the main operational section of the RUMig3 (optional).
- The machine has walls to contain the material when unloading.
- The main section of the RUMig3 is engineered to handle all rail traffic (420,000 lbs max).
- The machine can be operated in the EC 1 (central control) mode located on the hydraulic unit or it can be operated at EC2 (local control) which is located on the machine or it can be operated via Ethernet at a remote control room (optional).
- The main conveyor has a cover.

Shipping/weights

- The machine is shipped on 2 to 3 trucks when transported from Ashross in Pleasant Grove, Utah to installation location.
- The main section of the machine weighs 105,000 lbs.
- Each power unit weighs 14,200 lbs.
- Each exit assembly is 1,200 lbs.
- Each tail pulley assembly is 1,700 lbs.
- Each conveyor belt is 3,250 lbs.

530 South 250 West
Pleasant Grove, Utah 84062
801-376-9298 or 801-785-6464

Sales@ashross.com www.ashross.com